

Cyber is a rapidly growing and evolving risk that impacts all organisations in Australia. To protect an organisation's financial well-being and reputation, it is important to prepare for a cyber incident and know how to respond effectively if an incident occurs.

## How we can help

Our market-leading cyber advisory specialists can assist you in relation to all aspects of cyber risk.

We have advised hundreds of organisations in connection with Australian and multinational cyber security and data breach incidents. This includes some of Australia's largest and most high-profile matters.

Utilising our team's experience and expertise, we provide pre-incident and post-incident cyber advisory services to executives, boards and key individuals within organisations regarding cyber risk and responding to incidents.

Our clients are large ASX-listed companies, corporates, SMEs, insurers and insureds.

## Our expertise

We offer a wide range of advisory services and can tailor and/or combine our offerings to fit your organisation's needs.

## Pricing

Our competitive and bespoke offerings can be charged at hourly rates, or we can discuss fixed fee arrangements.

## Our services

Type of service	Different options
<b>Policy review and preparation</b>	General policies that we review or prepare include: <ul style="list-style-type: none"><li>• Incident response plan</li><li>• Business continuity plan</li><li>• Privacy policy</li><li>• Data retention policy</li></ul>
<b>Workshops</b>	General topics include: <ul style="list-style-type: none"><li>• Table-top simulated cyber incidents, including ransomware and data breaches</li><li>• Cyber claims and trends</li><li>• Key issues in ransomware</li><li>• Key issues in data breaches</li><li>• General employee training</li><li>• Cyber and director duties</li><li>• Privacy developments impacting cyber</li><li>• Cyber related litigation and class actions</li><li>• Incident response planning and recommendations</li><li>• Security of Critical Infrastructure</li><li>• Key issues in cyber insurance</li></ul>
<b>Assessments</b>	General assessments that we can undertake include: <ul style="list-style-type: none"><li>• Cyber health assessment</li><li>• Regulatory and compliance</li><li>• Privacy impact</li><li>• Reputational risk and communications</li><li>• Notification obligations in third-party contracts</li></ul>

## Key Contacts



**Eden Winokur**  
Partner & Head of Cyber  
T +61 2 8267 3257  
M +61 431 645 450  
[eden.winokur@hallandwilcox.com.au](mailto:eden.winokur@hallandwilcox.com.au)



**Alison Baker**  
Partner & Head of Privacy  
T +61 3 9603 3568  
M +61 405 326 206  
[alison.baker@hallandwilcox.com.au](mailto:alison.baker@hallandwilcox.com.au)



# A snapshot of Hall & Wilcox

## We are a firm of

**106+**  
years of proud history

**1100+**  
People

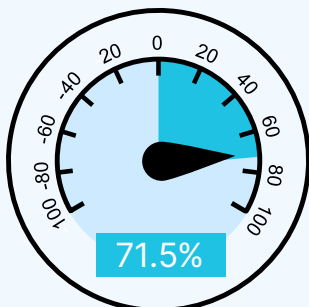
**135+**  
Partners

**26**  
Practice Areas

## Pro bono & Community

**35+**   
hours  
Per lawyer (per annum)

## Outstanding experience



Our NPS for Q2 FY25  
(Target 70)



## Commitment to inclusion & diversity



Gender



Inclusion

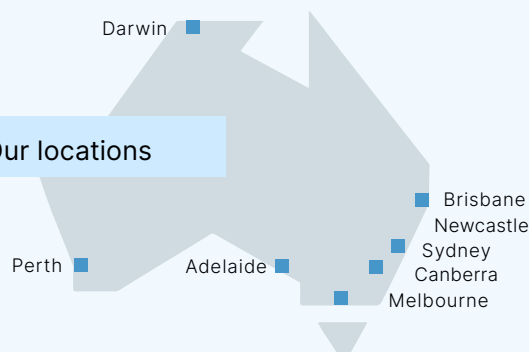


Flexibility



Connections

## Our locations



## Our Hallmarks



Stay true



Evolve always



Be remarkable



Better together



Respect respect

## Accolades



## What our clients say

"We are always extremely impressed by the level of service and expertise from Hall & Wilcox"

"Provided us with sound judgement, was really efficient and an absolute pleasure to deal with"

"Good commercial approach to resolving complex issues"

"[The team] were very details oriented and came up with solutions to queries which both parties had. Their efforts were collaborative as opposed to throwing up road blocks"

## Smarter Law

Smarter Law means looking beyond the status quo to find solutions that are better, faster and deliver value.

## Our cyber related practices include:

- Cyber
- Insurance
- Privacy
- Banking & Financial Services
- Corporate & Commercial
- Dispute Resolution

We continue to support reconciliation as detailed in our our Reconciliation Action Plan